



MASUNGI  
— GEORESERVE —

# INTIMATE WEDDINGS

2024



## A MESSAGE FROM THE PROJECT MANAGER

*Warm greetings!*

*Masungi Georeserve is our little piece of paradise born out of twenty years of restoration and love. It has become a sanctuary for all of us, a witness to some of our best and happiest moments, and a conservation project that has taught us much about ourselves and the life around us.*

*We are thrilled to finally share with you this place filled with some of our most wistful memories. We hope that by celebrating your special day with us, you will come to see it as your own magical place, too.*

*As a conservation area, we welcome intimate and minimalist celebrations that are as much about the harmonious marriage of nature and man as they are about the union of two souls and two families.*

*Celebrants are expected to ensure the georeserve policies are observed by all guests, aides, and suppliers.*

*Smoking, littering, rowdy behavior, vandalism, disruption of plant and animal life, among others, are strictly prohibited.*

*As stewards of the georeserve, our park rangers will be implementing these policies and their corresponding penalties strictly during the event.*

*We also hope that you consider avoiding single-use plastics and other wasteful materials and activities.*

*We believe that the most memorable celebrations are those that are focused on what matters the most—surrounded by your closest family and friends, and enveloped in the natural, timeless elegance of nature.*

*Yours,*

*Ann Dumaliang*



## SILAYAN

Located in the Garden Cottages area adjacent to the Georeserve, Silayan is a repurposed hilltop hut that boasts of sublime 360-degree views of the Masungi limestone pinnacles, Laguna de Bay, Sierra Madre mountain range, and the Metro Manila skyline.



**Recommended Seating  
Capacity in Silayan is 40  
persons.**

40 persons (Indoor Area)  
40 persons (Al Fresco  
Area)

It also features an al fresco dining area, a small open space for outdoor ceremonies, and a reflection pond. Silayan is recommended for intimate rustic or garden weddings.

Silayan's design elements are handcrafted with love and passion by local craftsmen. Using sustainable resources found within the georeserve, such as reclaimed timber from fallen trees, bamboo culms, and cogon grass, they have turned remnants of nature into works of art that are elegantly Filipino.



## PINE PATCH, TIPUNAN, & DASALAN

The Pine Patch just below Silayan is home to an open field and two glass huts. The open field may be used for outdoor ceremonies and/or receptions.

One of the glass huts is Tipunan, an indoor space with glass walls, cogon rooftop, and a view of the Laguna de Bay. Adjacent to it is Dasalan, featuring a soaring canopy, amphitheater-style seats, and elegant glass walls surrounded by mango trees.

These spaces have been repurposed in the Garden Cottages area next to the georeserve.

*Ideas: Tipunan can be used as a holding area or venue for your cocktail hour before the main reception. On the other hand, Dasalan can be another option for indoor ceremonies.*

### Recommended

#### Seating

#### Capacity

#### Tipunan

40 persons (Indoor Area)

40 persons (Outdoor Area, Reception Style)

#### Pine Patch

Up to 80 persons (Outdoor Area only)

#### Dasalan

40 persons (Indoor, Amphitheater Style)



# SILAYAN WEDDING

Narra Option | Molave Option



# NARRA OPTION

This includes the following:

- 10-hour use of Silayan (with ingress and egress)
- 8-hour complimentary use of Preparation Room (1 Mountain House and 1 Cabin) good for 4 guests with maximum of 15 guests in the guest list (starting 2 hours before the venue hire)
- Symbolic Native Tree Ceremony



Recommended no. of guests	Venue Hire (in PhP)
61-80	160,000
60 and below	140,000

• Prices and options are subject to change without prior notice. • Events are subject to the georeserve's "lights off and gates closed" policy at 9 PM. Thus, program proper must end at 8PM at the latest.

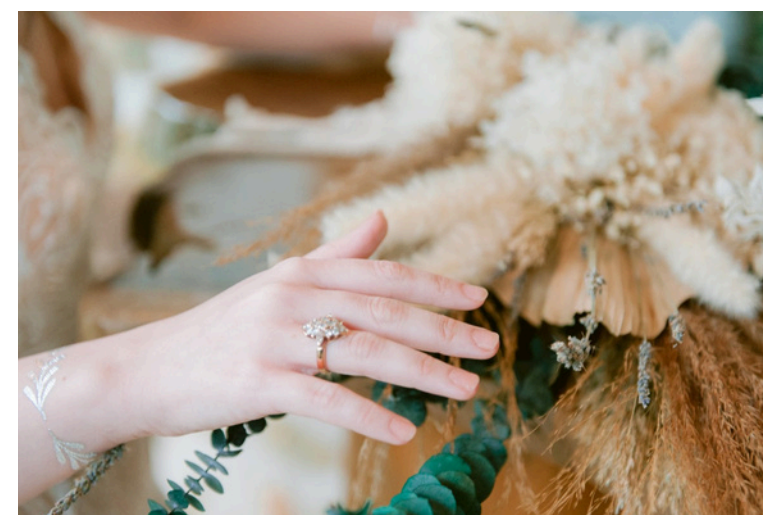




## MOLAVE OPTION

This includes the following:

- 10-hour use of Silayan, Tipunan, Dasalan, and Pine Patch (with ingress and egress)
- 8-hour complimentary use of Preparation Room (1 Mountain House and 1 Cabin) good for 4 guests with maximum of 15 guests in the guest list (starting 2 hours venue hire)
- Symbolic Native Tree Ceremony



Recommended no. of guests	Venue Hire (in PhP)
61-80	195,000
60 and below	175,000

• Prices and options are subject to change without prior notice. • Events are subject to the georeserve's "lights off and gates closed" policy at 9 PM. Thus, program proper must end at 8PM at the latest.

# ADD-ONS

Minalot Meal | Prenup Shoots |

Overnight at the Mountain House | Overnight at the Cabin | Overnight at Kanlungan Lodges

These spaces are located in the Garden Cottages area, 5-10 minutes away from the Georeserve by car.



## Minalot Meal

A banana leaf-wrapped meal of grilled chicken, vegetables, rice, and salted egg prepared by the local community.

PhP 400.00/serving

## Overnight at the Cabin (By Request)

We can accommodate 1 to 2 guests at the Cabin (loft and mattress only) with complimentary breakfast, upon request and subject to availability.

PhP 5,000.00

## Overnight at the Mountain House (By Request)

Located inside the Garden Cottages, we can accommodate 2 to 3 guests per Mountain House with complimentary breakfast, upon request and subject to availability. There are 2 available Mountain Houses for guests—the Upper Mountain House and the Lower Mountain House.

PhP 10,000.00

## Overnight at Kanlungan Lodges (By Request)

Tucked inside the Garden Cottages area, Kanlungan consists of five elegant glass huts designed with ultimate privacy and a mountain living experience in mind. Upon request and subject to availability and approval of our directors, the entire five huts and its private kitchen may be used for an overnight stay. Each hut has one king bed and can carry an additional sleeping mattress.

PhP 100,000.00/night

## Prenup Shoots

Prenup shoots are available at select areas of the georeserve. Couples who will hold their weddings at Silayan may choose to have their pre-nup here for a fee.

*Please note that we are not a resort. These spaces are situated in the Garden Cottages near the Georeserve, and were repurposed from existing structures to support conservation-related activities. As such, facilities may be limited and conservation practices are prioritized.*







## FOOD

K by Cunanan | Clementine

Couples can choose from our accredited caterers, K by Cunanan and Clementine. Non-accredited main food caterers are subject to an additional fixed refundable cash bond of PhP 10,000.00, while food carts/bars in excess of three food carts/drink bars are subject to PhP 3,000 corkage fee. All non-accredited suppliers shall be subject to accomplishment of one-time supplier agreement.



# CONTACT

## US

Special Requests | Ocular Visits



### Special Requests

Please let us know of any special requests and arrangements according to your needs and preferences and we will be happy to see what we can do.

### Ocular Visits

We also welcome ocular visit requests every Friday and Saturday at 9:00 AM and 10:30 AM. Kindly reach out to our Partnerships & Events Officer at [events@masungigeoreserve.com](mailto:events@masungigeoreserve.com) to schedule your visit.





## CELEBRATE WITH US



Kilometer 45, Garden Cottages, Marcos Highway, Baras, Rizal, Philippines



+63 998 536 1624



[events@masungigeoreserve.com](mailto:events@masungigeoreserve.com)



[@silayan.mg](https://www.instagram.com/silayan.mg)



[www.masungigeoreserve.com](http://www.masungigeoreserve.com)

Photos by: Francis Libiran Bridal and Nice Print Photography & Exige Weddings, Conspire the Universe, Arvin Simbulan Photography, Colove Studios, POSH Studio, Visual Folks, and K by Cunanan